

The Gait Measuring System and Environment for the Elderly People Needing Nursing Care

Masataka Niwa^{*1,2}, Ikuhisa Mitsugami^{*1,2}, Mitsuru Nakazawa^{*1,2},
Hirotake Yamazoe^{*1-3}, Yasushi Yagi^{*1,2}

^{*1}*Institute of Scientific and Industrial Research, Osaka University,*

^{*2}*CREST, JST,*

^{*3}*Osaka School of International Public Policy, Osaka University*

E-mail: {niwa, nakazawa, mitsugami, yagi}@am.sanken.osaka-u.ac.jp,

yamazoe@osipp.osaka-u.ac.jp

In recent years, the numbers of elderly people have been increasing. We aim to evaluate elderly people's walking ability, physical function or cognitive function from their gait of walking or stepping in place. For this purpose, it is necessary to measure the large number of the elderly people's gait in the nursing home. Then, we propose a measuring system for the elderly people who need nursing care. Kinect is used for this system's sensor. By using the Kinect, the system can measure the color image, depth data and skeleton of gait without attachment. And, it becomes high portability and easy installation as shown in Fig. 1.

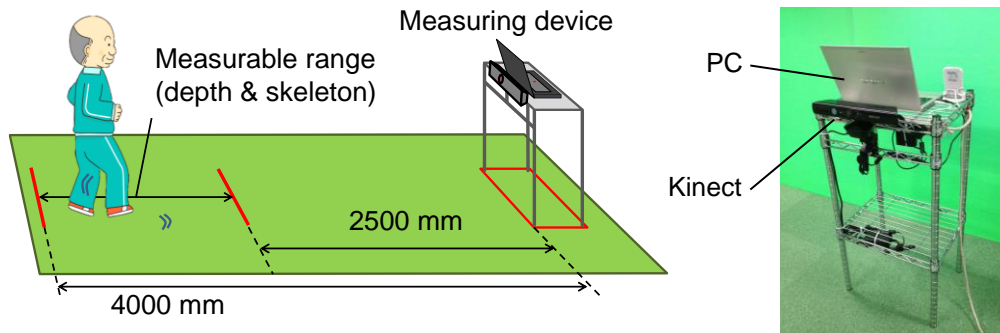


Fig. 1 Measuring system and environment